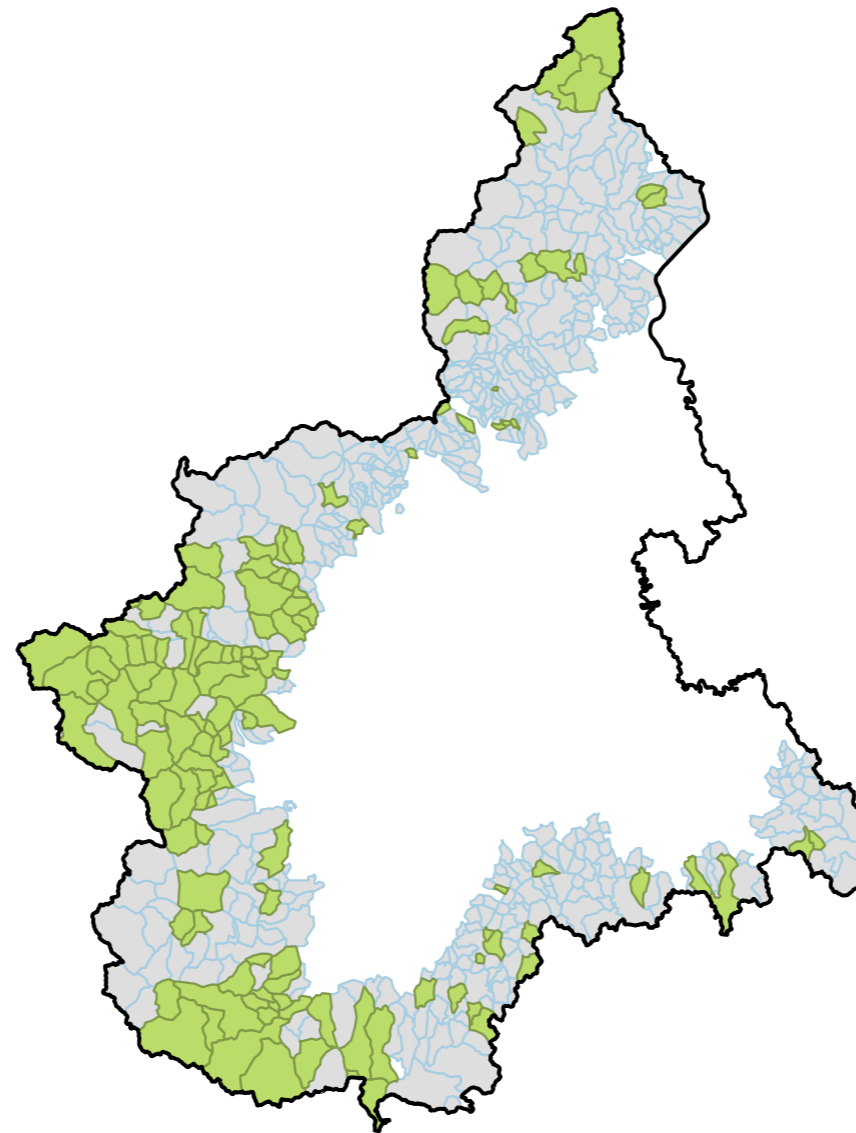

ATPM: area di inchiesta

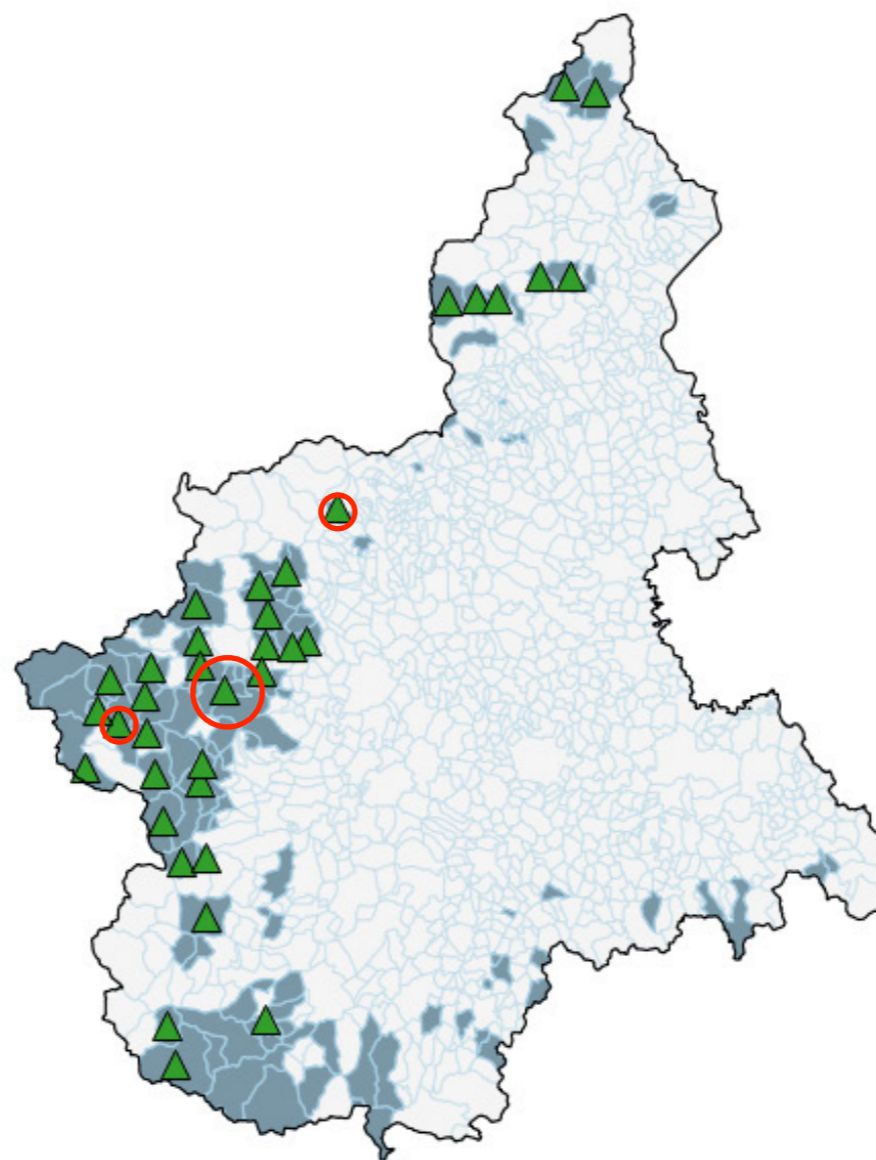


cartina elaborata con QGIS 2.14 (<http://qgis.org>)



il tipo alpe

-  area indagata
-  alp/arp

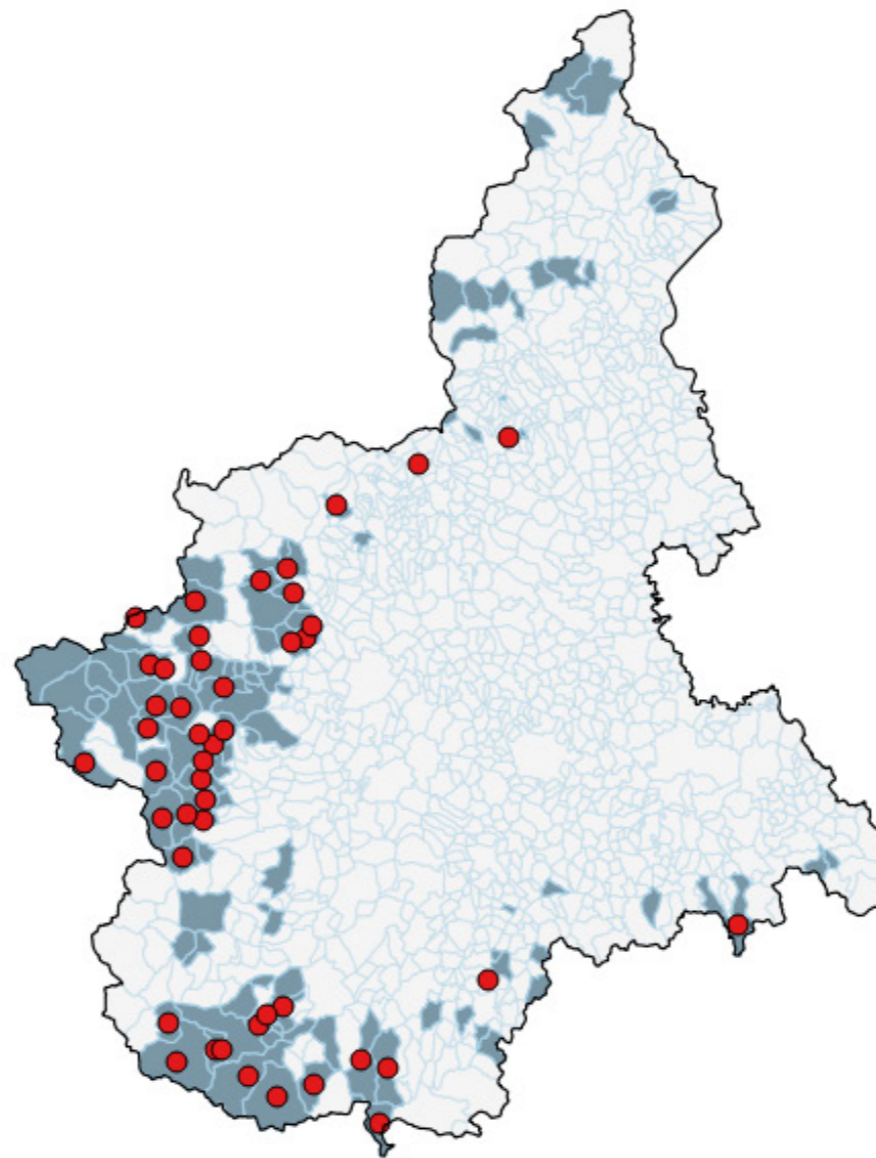


cartina elaborata con QGIS 2.14 (<http://qgis.org>)



il tipo gias

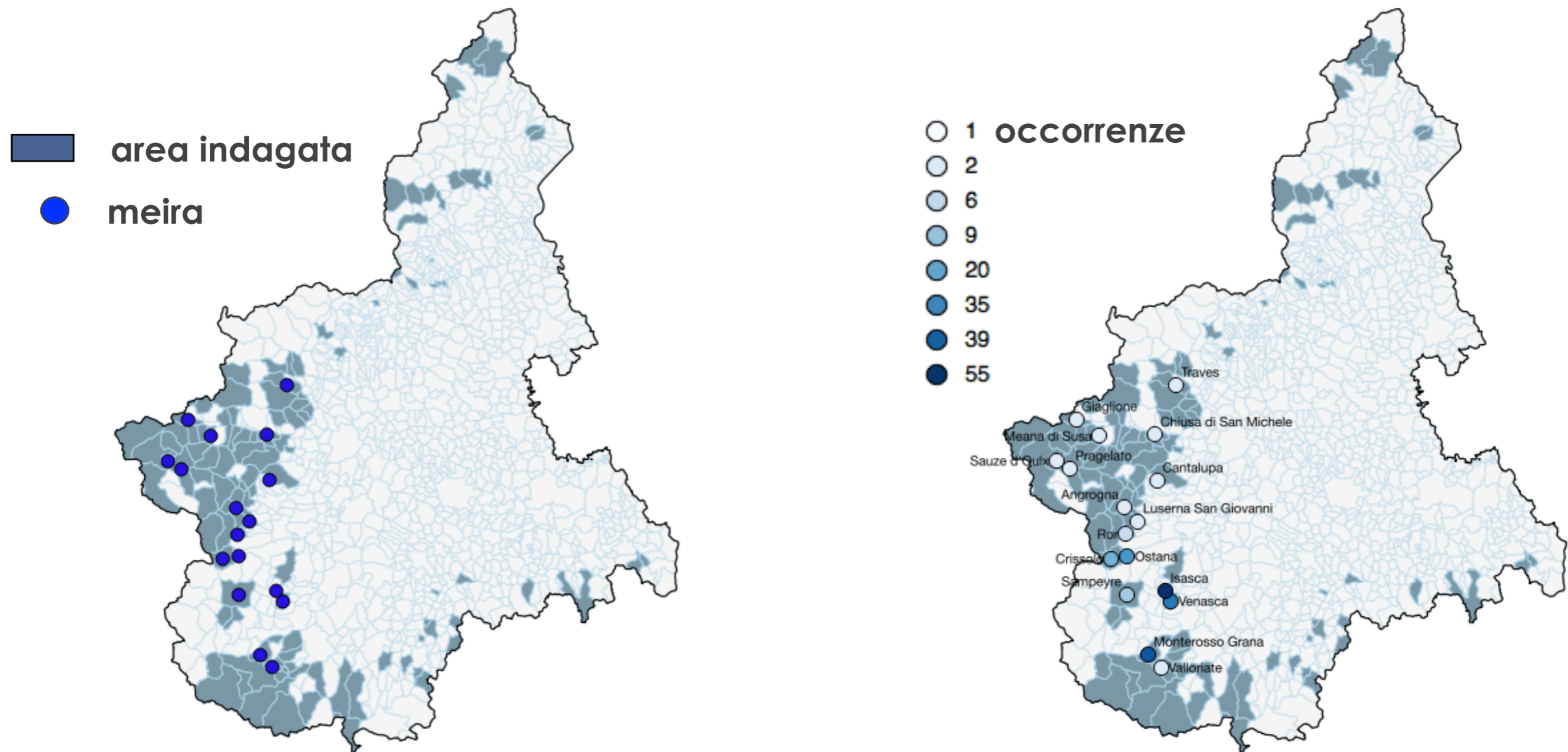
-  area indagata
-  gias



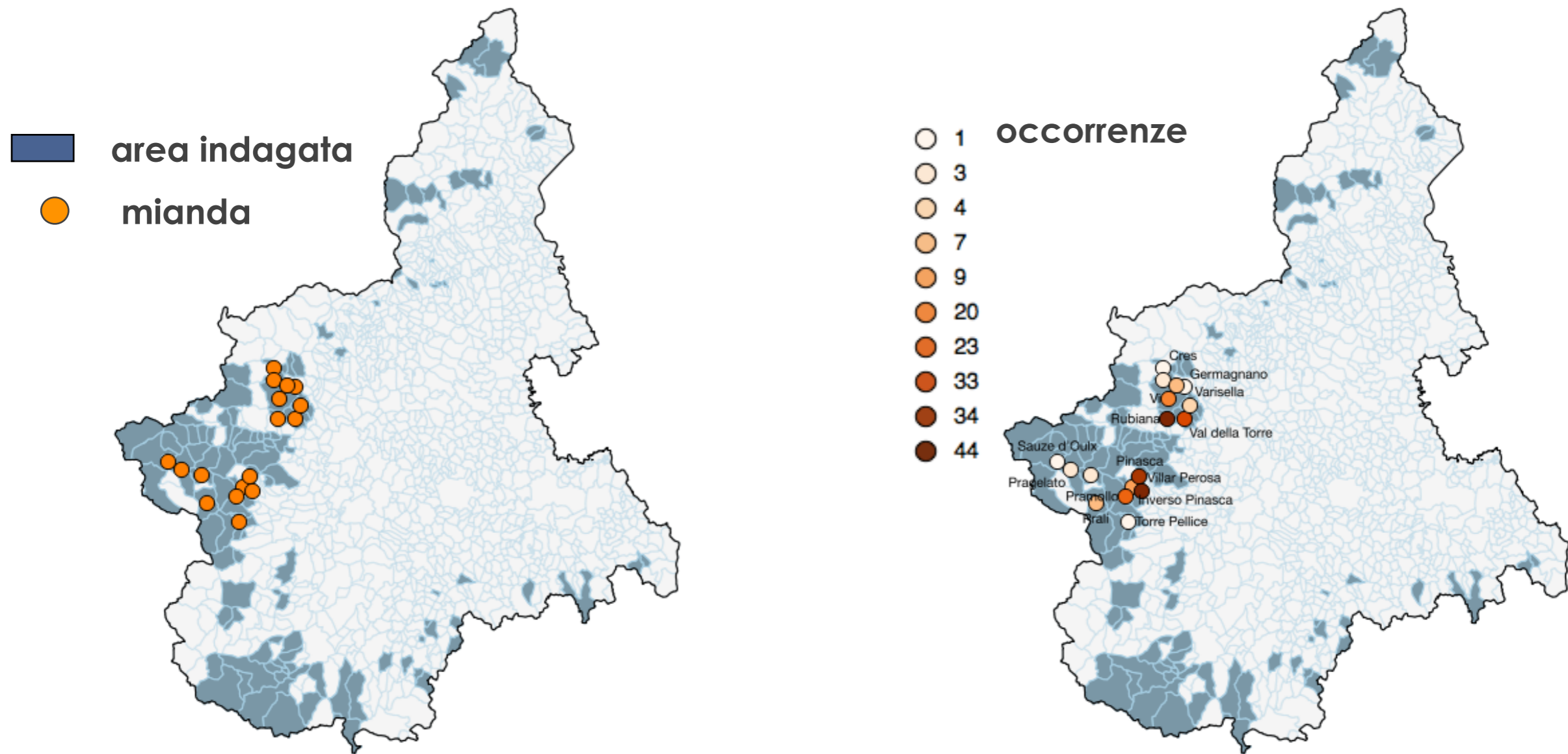
cartina elaborata con QGIS 2.14 (<http://qgis.org>)



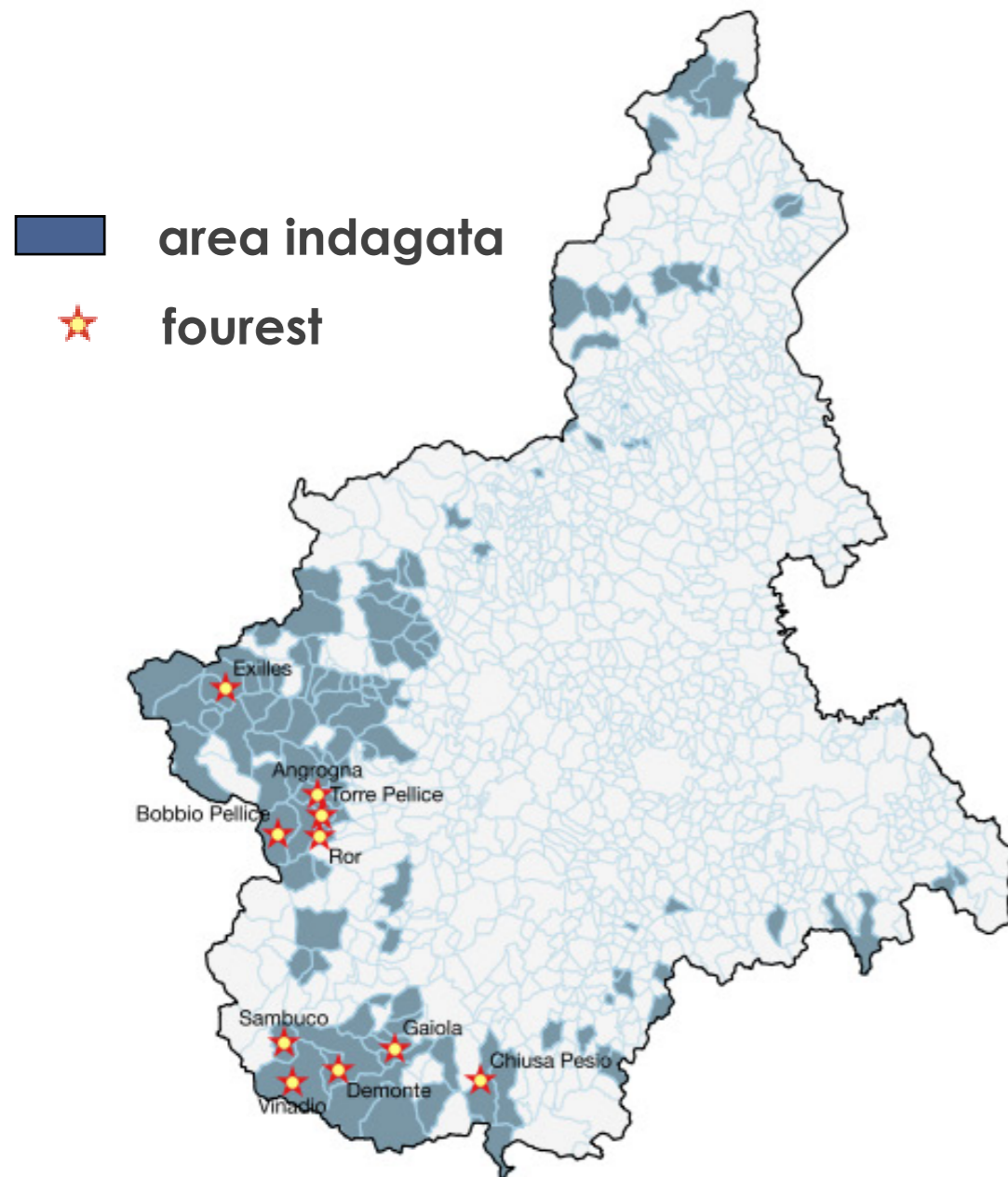
il tipo meira



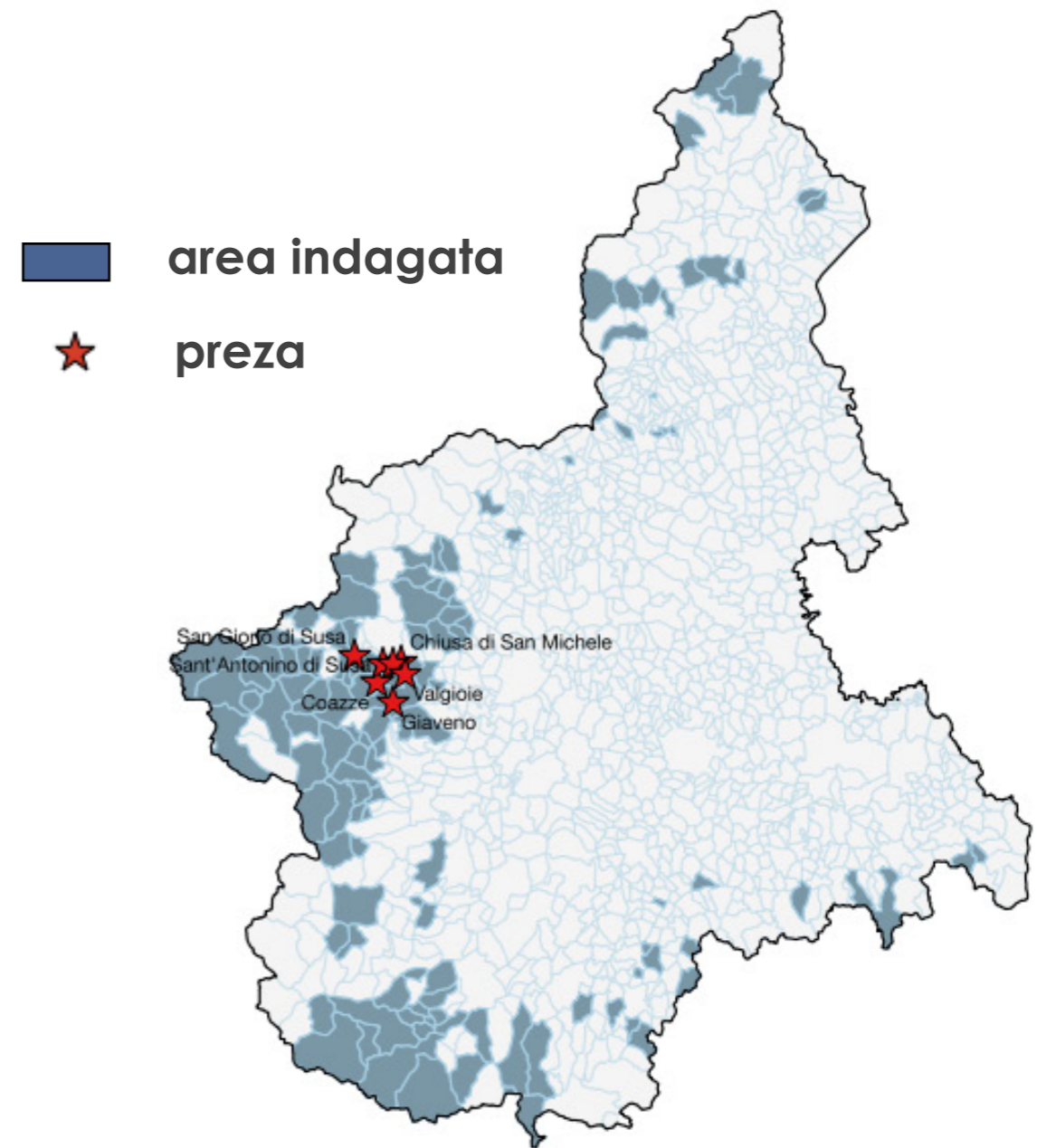
il tipo mianda



il tipo foresto

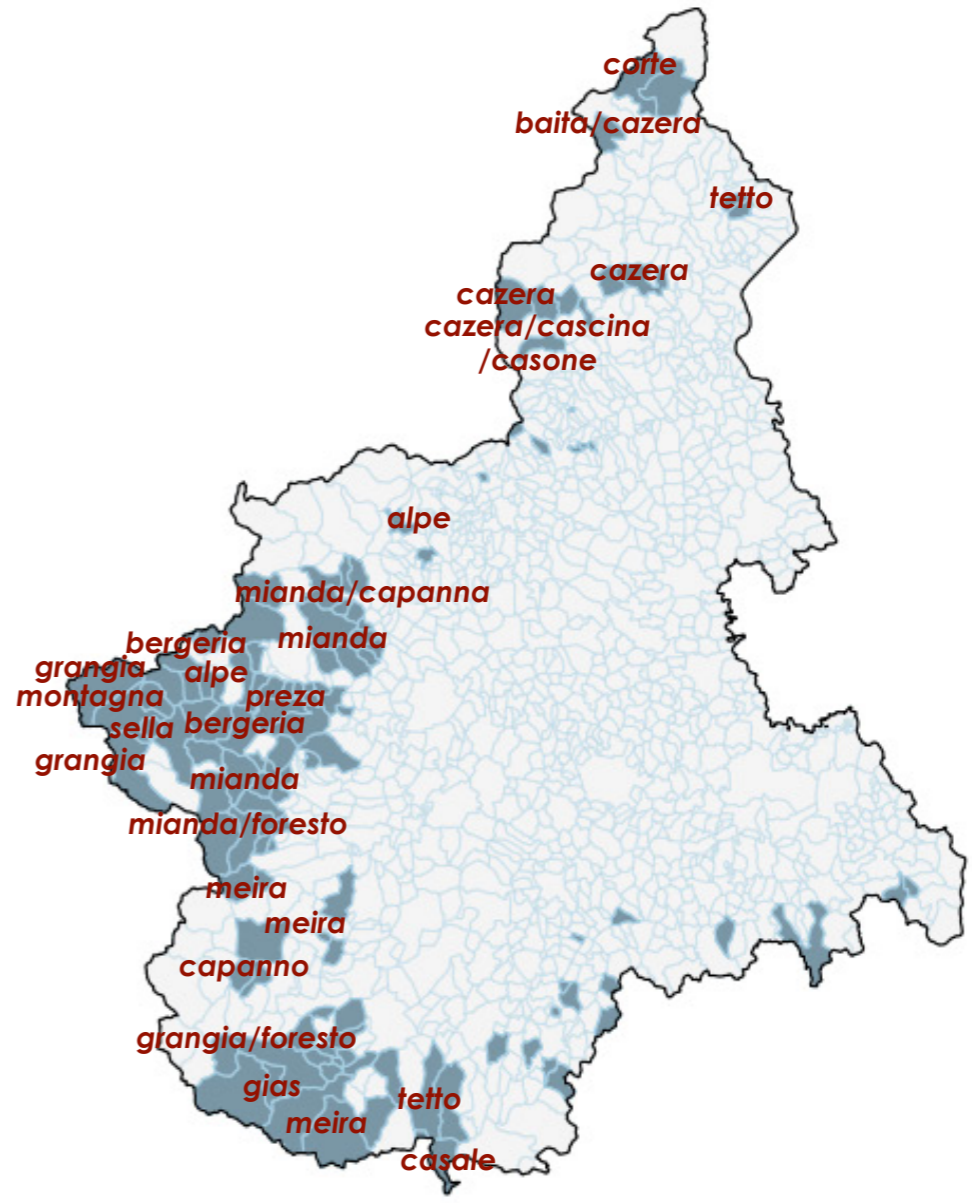
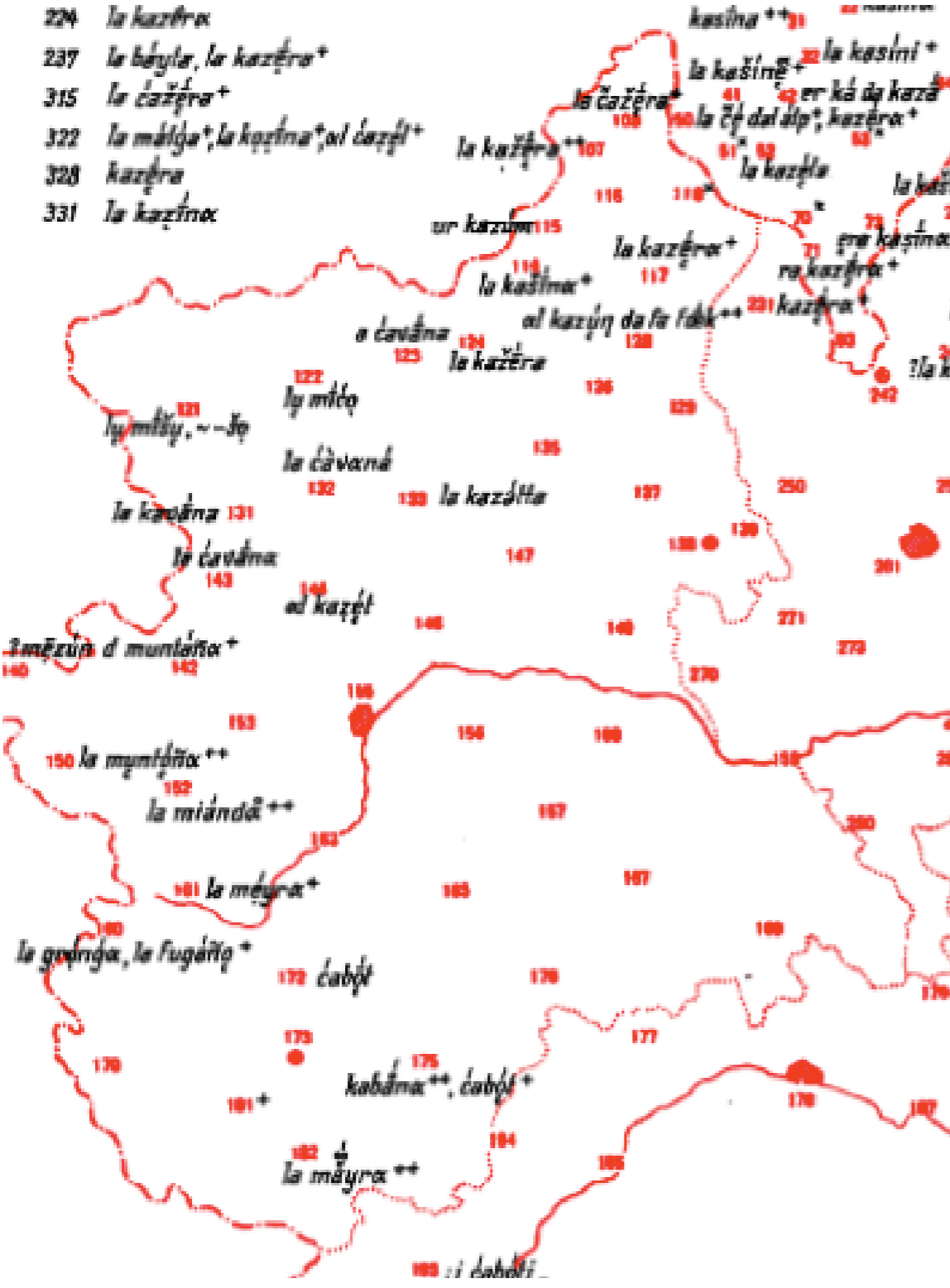


il tipo preza



la cascina di montagna (AIS 1192)

- 224 *la kazétra*
- 237 *la báyla, la kazétra+*
- 315 *la čazétra+*
- 322 *la málča*, la kazétra*, al čazéft+*
- 328 *kazétra*
- 331 *la kazétra*



area indagata
tipi toponimici